

Linked Page



Certified Register



Wholesale Supplier CARDIOLOGY AND ICU EQUIPMENT A to Z Hospital Equipment and Surgical Products **B to C**



 **8275140877**

 **9822688071**

 **info@amramedtech.com**



**Sr No.29/1/2, Adarsh Nagar,
Uruli Devachi, Hadapsar, Pune
Branches :- All Maharashtra**



amramedtech.com

- **PULSE OXIMETER**
- **3-CH OR 12 CH HOLTER RECORDER**
- **AMBULATORY BP MONITOR**
- **BIPAP & AUTO CPAP**
- **DIGITAL VIDEO COLPOSCOPE**
- **JAUNDICE DETECTOR**
- **INFRARED VEIN FINDER**
- **ECG MACHINE**
- **TABLE TOP PULSE OXIMETER WITH NIBP**
- **PATIENT MONITOR**
- **SYRING PUMP**
- **INFUSION PUMP**
- **VIDEO LARYNGOSCOPE**
- **FLUID WARMER**
- **AED (MADE IN INDIA)**
- **BI-PHASIC DEFIBRILLATOR**
- **VENTILATOR**



PULSE OXIMETER

AMRA-NT-18



**NT-18 HANDHELD PULSE OXIMETER
ALSO AVAILABLE IN VETERINARY PULSE OXIMETER**

- Bright 7 Segment Display
- Durable, Compact and Lightweight
- Spo2 And Pulse
- Suitable for Adult, Pediatric and Neonate
- With Rechargeable Battery & Charger

AMRA-CMS-50D



AMRA-CMS-50E

(Battery Rechargeable
with beep alarm)



AMRA-YK80A



TECHNICAL PARAMETERS

- Display format: LCD Back light: LCD
- SPO2:35-99%
- Pulse ratio:30-250BPM
- Pulse wave: LCD graphic display
- Battery voltage low indication: LCD Signals
- Power requirement: two AAA size 1.5 Alkali battery

3-CH OR 12 CH HOLTER RECORDER



AMRA-HR-TLC9803

SPECIFICATIONS

- | | |
|----------------|---------------------------------|
| Recording time | • 24 Hr ours (48 hours, option) |
| Data transfer | • USB Interface |
| Memory size | • 2 GB (or more) |
| Battery | • 2AA size alkaline battery |
| Dimensions | • 110mm x 60mm x 25mm |
| Weight | • 105 gm. |
- (excluding Battery)

AMBULATORY BP MONITOR



AMRA-CMS-ABPM50

SPECIFICATIONS

- | | |
|-------------------------|--|
| 2.4" Color LCD Display | • Oscillometric Method |
| Method Of Measurement | • Systolic 50-260mm Hg/Diastolic 30-180mm Hg |
| Range Of Blood Pressure | • 24 Hours |
| Recording Time | • Up to 350 Measurements |
| Data Memory | • USB Transfer |
| Communication Port | • 2XAA Size Alkaline Battery |
| Battery | • 120mm X 70mm X 30mm |
| Dimensions | • 200gm |
| Weight | |



BIPAP & AUTO CPAP



AMRA-AUTO-CPAP

TECHNICAL SPECIFICATIONS (MODEL: RESmart GII-Auto CPAP)

- Display 3.4 Inch LCD
- Mode: CPAP AUTO
- Mode of Operation: continuous
- AC Power Consumption: 100 240VAC, 50/60 Hz
- Pressure Range: 4-20 CM, H2O
- Data Storage: SD CARD
- Sound Pressure Level: < 30 DB
- Maximum Flow: >20 LPM
- Pressure Display Accy: +/-0.5 HPA
- Dimensions: 170mm x 196mm x 118mm,
- Weight: <1.5kg

AMRA-BAC-ST-30



AMRA-Y-30T GII-AUTO BPAP



BI-PAP

- Display: 2.4
- Mode: CPAP, S,
- Mode of Operation: continuous
- AC Power Consumption: 100-240VAC, 50/60 Hz
- Pressure Range: 4-20 CM, H2O
- Data Storage: SD CARD
- Sound Pressure Level: < 30 DB
- Pressure Display Accy: +/-0.5 HPA
- Dimensions: 170mm x 196mm x 118mm,
- 290 x196 x134mm (with InH2 TM heated humidifier)
- Weight: <1.5kg

DIGITAL VIDEO COLPOSCOPE



AMRA-99

- Imaging system from 1/4" SONY CCD Image Sensor which creates brilliant-resolution images
- Images can be displayed, captured and printed in real time digital camera provides step free continuous zoom and focus, electric green filter removes red from image with no loss of light.
 - Pixel: 120,00,00
 - Minimum working distance: 100mm-350mm
 - Magnification: 1-72
 - Focusing: auto manual
 - outout interface: VIDEO PAL/NTSC
 - Lens resolution: 1/4 super color CCD
 - Horizontal resolution over 470 lines
 - Vertical resolution-over 350 lines
 - Mode: green, black/white, indoor, outdoor, normal
 - Freeze: auto/manual
 - SNR: 50dB
 - Minimum illuminance: 0.05Lux
 - White balance: Auto/Manual
 - Light source: Multipoint surrounded high brightness
 - White cold light source
 - Video Dip Pal/NTSC 1.0vp-P75

JAUNDICE DETECTOR

Jaundice Detector Feature

- Liquid Crystal Display is easily viewable
- Streamlines design makes it small, delicate and easy to be handled.
- Long service life, low energy consumption
- Battery indicator indicates when battery needs recharging
- Test results are rapid providing serum bilirubin concentration
- Storage and memory function
- convenient to browse and delete functions
- convenient self calibration
- easy use and maintenance

AMRA-JD-12E



INFRARED VEIN FINDER

AMRA-V-PINK



SPECIFICATIONS:

- Effective projection distance 29-31cm
- product color: white color
- product size: 152 x 83 x 75mm (L x W x H)
- Infrared Wavelength: 750nm-980nm
- Power source: rechargeable polymer eat
- Working voltage: 3.0v-42v
- Weight about 290g
- Environment temperature: 500-4000
- Relative humidity Berow 80%
- Projection illuminance: 300lux - 1000lux
- Used for: palms, arms. Feet. Forehead etc

Product features:

- Portable handheld design. Easy to carry and use at any time.
- Image performance optimization. Adjustable brightness. Tough accuracy
- 3 kinds of imaging modes blue 8 white. Red 8 green, white to satisfy p.p. Who are different skin color
- Safe medical cold lights for your eyes when veratm9
- Sleep function. More comfortable operation.
- Energy saving to last usage time It can be used widely in hospital. Pediatric clinic. Emergency room. Outpatient clinic/center. Clinical laboratory.
- Blood bank/center. Military medics unit. theon CDC. Rehabilitation center. Nursing homes etc

ECG MACHINE

FEATURES

- Simultaneous acquisition of 12-lead ECG data, real-time recording
- 10.2 Inch LCD Color Display
- Graphic display of 12-lead ECG waveform
- Built-in analysis software of age which assures accurate analysis result
- Auto-measurement, auto-interpretation, waveform playback and storage of ECG data.
- Patients Information Can be Input
- Lead off & lack off paper detection function.
- **Data Transmitting to PC Via RS232/USB**
- **USB Flash Disk & SD Memory, PC Review & Print**
- Heart rate measurement and pace-maker protection circuit
- Multi-printing formats: manul/automatic, standard 12 channel, 3 channel phis 3 rhythm lead, 6 channel, 6 channel plus rhythm
- AC, DC or built-in lithium battery power supply, alarm of battery weak and lead-off
- Paper Size: 210mm X 20m
- RS232 and USB interface cope with data-share or remote data management requirement (Optional)

AMRA-12E (TOUCH SCREEN)



DATA STORAGE IN USB 12 CHANNEL ECG

DIGITAL 3 CHANNEL ECG MACHINE (TOUCH SCREEN)

- Simultaneous acquisition of 12-lead ECG data
- Screen Display: 5.7 Inch LCD screen, 12 leads display and working Status display, 200 ECG Data Storage With Touch Screen Display
- Measurement & Analysis: automatic measurement and analysis.
- Recording Mode: 3CH, 3+1CH, 60 Sec Compressible waveform record
- Record Paper: 80mmX20/30m
- JPG/PDF Report, PC Connectivity, Pan Drive Storage
- cable break off or power deficiency.
- Communication Interface: USB, professional input and output interface
- Power Supply: AC 100-240V(50/60Hz), DC12V/1500mAh
- Data Storage: SD card for data storage (Optional)

AMRA-3E



3 CHANNEL ECG

AMRA-CMS-300G



3 CHANNEL ECG-3.5" INCH LCD

AMRA-6E (TOUCH SCREEN)



6 CHANNEL ECG-7.0" INCH LCD

AMRA-CMS-1200G



12 CHANNEL ECG- 9-INCH LCD



ECG MACHINE

AMRA-Cardiart 108T DIGI



FEATURES

- Single-channel ECG recorder
- Lightweight, compact and portable design with one-touch operation ensures ease of use
- 12-bit A/D converter, 0.1 Hz to 150 Hz bandwidth, 800Hz sampling frequency
- Includes lead-off indication
- Internal rechargeable NiMH battery – 2.5 hrs of operation
- Rubber keypad with function keys and LED indicators
- Real-time high fidelity thermal array recording

AMRA-Cardiart 6208 View



FEATURES

- Three-channel ECG recording
- 3.5 inch color LCD screen
- Automatic measurement and interpretation
- ≥12-bit A/D converter, 0.05 – 150 Hz bandwidth, 1000 Hz sampling frequency
- Internal storage for up to 500 ECGs that can be enlarged by USB
- High performance Li-ion rechargeable battery
- Report formats: PDF and optional SCP/FDA/XML/DICOM
- Connectivity: FTP, supports barcode scanner & USB Printer
- Optional: PC interface software

AMRA-Cardiart 6108T



FEATURES

- Single-channel ECG recorder
- Supports automatic and manual modes of recording
- Thermal print ensures high-resolution ECG printing on 50 mm paper
- Stores last ECG recording in the memory
- Built-in rechargeable NiMh battery



AMRA-iMAC-300 5"

3 CHANNEL ECG MACHINE
LED Display WIFI, LAN



AMRA-E10 5"

3 CHANNEL ECG MACHINE
LED Display **Touch Screen**



AMRA-U90 10"

High End 12 CH ECG Touch Screen,
WIFI & LAN Connectivity, Z fold paper



ECG MACHINE

AMRA-Cardiart 9108



FEATURES

- 12-channel ECG recording
- 5.7-inch foldable LCD display
- Automatic parameter measurement and interpretation
- 24-bit A/D converter, 0.01 - 300 Hz bandwidth, 16000 Hz sampling frequency
- Internal storage of upto 800 ECGs that can be enlarged by USB
- Built-in rechargeable Li-ion battery
- Report formats: PDF and optional SCP/FDA-XML/DICOM data export
- Connectivity: FTP, supports barcode scanner & USB printer, optional Wi-Fi
- Optional PC interface software allows to access EMR/PACs/GDT-based systems (HL7 protocol)

AMRA-Cardiart 9108D



FEATURES

- 12-channel ECG recording
- 7-inch high resolution color LCD with touch screen option
- Glasgow ECG Interpretation algorithm
- 24-bit A/D converter, 0.01 - 300 Hz bandwidth, 16000 Hz sampling frequency
- Internal storage of upto 800 ECGs that can be enlarged by USB & SD card
- High performance Li-ion rechargeable battery
- Report formats: PDF and optional SCP/FDA-XML/DICOM data export
- Connectivity: FTP, supports barcode scanner & USB printer, optional Wi-Fi
- Optional PC interface software allows to access EMR/PACs/GDT-based Systems (HL7 protocol)

AMRA-Cardiart GenX3



FEATURES

- Three-channel ECG recording with trace darkness control
- Wide 4.3 inch 65K Color TFT display
- Glasgow ECG Interpretation algorithm
- 12-bit A/D converter, 0.05 - 150 Hz bandwidth, 1000 Hz sampling frequency
- Alphanumeric keypad with soft silicone keys
- Full disclosure view of ECG analysis on display
- Internal storage of upto 250 ECGs that can be enlarged by USB
- Rechargeable Li battery for energy-efficient operation
- Connectivity: supports USB printer, optional FTP, export selected record(s) in HL7 format
- Optional: Real-time ECG transfer to PC through USB

AMRA-Cardiart GenX1



FEATURES

- Single-channel ECG recorder with 12-lead simultaneous acquisition
- Large character LCD display
- One-touch operation with soft silicone keys
- Auto, manual & rhythm modes
- Uses Glasgow ECG Interpretation algorithm
- Built-in rechargeable Li battery
- Optional: Real-time ECG data transfer to PC through USB

PC ECG MACHINE



PC based ECG Machine with Simultaneous Acquisition

- PC based ECG Machine with DSP Technology
- Full Frequency Response 0.05 to 100 Hz
- Simultaneous Acquisition
- Measurements of all 12 leads with Interpretation
- ECG conversion possible into Image format
- Upgradation for telemedicine
- Simultaneous acquisition of 12 Leads.
- Display of running traces of 12 leads split into group of 6 each.
- Facility to send ECG data to Remote care server for expert opinion

Key Features

- Measurements of all 12 leads with Interpretation
- PC based ECG Machine with DSP Technology
- Full Frequency Response 0.05 to 150 Hz
- ECG conversion possible into Image format
- Upgradation for telemedicine
- Simultaneous acquisition of 12 Leads.
- Display of running traces of 12 leads split into group of 6 each.



TABLE TOP PULSE OXIMETER WITH NIBP



AMRA-PULSE OXIMETER & NIBP

DISPLAY

- 7 segment LEDs for systolic pressure, diastolic pressure SPO2 and pulse rate
- 2.4" color LCD for waveforms, bargraphic, trend and system menu
- Weight: 1.15 kg | Dimension: 232 mm x 198 mm x 75 mm

DISPLAY

- Method: Oscillometry
- Operation modes: Manual/Automatic
- Auto Measure time: 1~250 minutes adjustable, interval 5 minutes
- Measurement range: 10~270mmHg
- Over pressure protection: Yes
- Alarm: Systolic, Diastolic, Mean, PR, SPO2
- High bright LEDs display of NIBP,SPO2 and pulse rate
- High resolution color LCD for trend tabular and SPO2 waveforms display
- Manual/auto/continuous measurement of NIBP
- Adjustable audible and visual Alarms
- Up to 2000 groups NIBP data storage or SPO2 data up to 10 hours
- Suitable for adult, pediatric and neonatal patient



AMRA-5100T

PULSE RATE

- Range: 25~250bpm
- Resolution: 1bpm
- Accuracy: ±2bpm or +2% (select larger)
- Net Wight: 1.6 kg
- Dimension: 240mm x 190mm x 162 mm

SPO2

- Measurement Range:
- 0 - 100%
- Resolution: 1%
- Accuracy: 70-(100% +2% , 0- 69% unspecified
- Alarm range: 0 - 100%



AMRA-HANDY ETCO2



AMRA-ONLY PULSE OXIMETER



AMRA-POLY WATCH



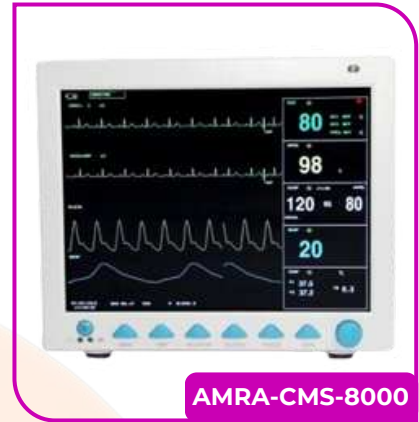
PATIENT MONITOR



AMRA-9009C



AMRA-9009T



AMRA-CMS-8000



AMRA-9009H



AMRA-15



AMRA-9009V

Optional-Printer, IBP, Touch Screen

Nellcor/ Masimo SpO2, ETCO2 & CMS, 12 LED ECG, CARDIAC O/P

NIBP

- Method: Digital Automatic oscillometric
- Operation mode :
- Manual/Automatic/continuous
- Over-pressure Protection: Double Safety Protection
- Alarm: Systolic, Diastolic, Mean

FEATURE

- 5 standard parameters: ECG, RESP, NIBP, SPO2,1-TEMP
- Realtime S-T segment analysis and ARR analysis.
- Multi-cuplay selectable including standard, large font, trend OxyCRG dynamic
- Multi 7-lead ECG waveforms display in phase and capture dynamic waveforms.
- - Large volume of tabular and graphic trends information storage and easy to recall
- Efficient resistance to interference of Defibrillator.
- Up to 2 hours working capacity of built-in rechargeable battery.

SPECIFICATIONS ECG

- ECG: Lead mode: 5-lead (R,L,F,N,C)
- Waveform: 3 and 7 chanel selectable
- Heart rate range: Adult: 15~300bpm;
- Arrhythmia analysis & St.: YES

SPO2

- Measurement range: 0-100%
- Accuracy: +2%(70-100%);0-69% unspecified
- Alarm range:0~100%
- Pules Rate range:20~300bpm

TEMPERATURE

- Compatible probe: YSI or CYF
- Measurement range: 5~50°C

RESPIRATION

- Method: Thoracic impedance between (RA-LL)
- Measurement range:
- Adult:7~120rpm;
- Neonate/Pediatric: 7~150rpm



PATIENT MONITOR



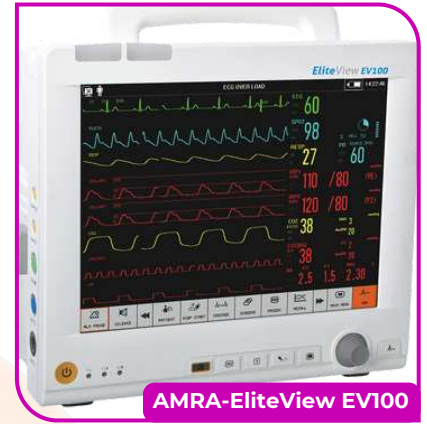
AMRA-Vivid Vue 12

Reliable patient monitor for OT and critical care environment, Vivid Vue 12 comes with a 12.1" high resolution display with an optional touchscreen feature and allows monitoring advanced parameters such as IBP, CO2, Gas monitoring. It has integrated HL7 communication protocol with HIS connectivity.



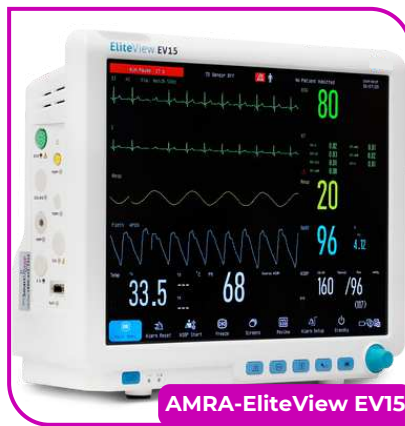
AMRA-Vivid Vue 8

Vivid Vue 8 is a multipara patient monitor that comes with an 8.4" high-resolution colour LCD display and offers reliable patient monitoring across all point of care. The Monitor also has integrated HL7 communication protocol with HIS connectivity and comprehensive data storage facility, allowing you to review patient's status conveniently.



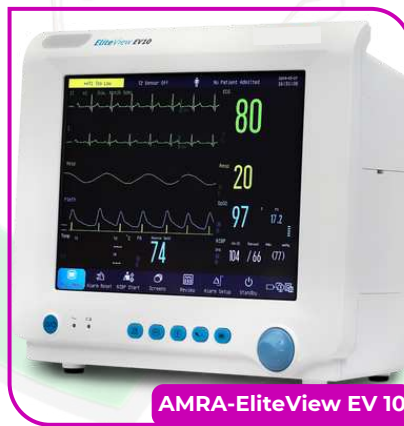
AMRA-EliteView EV100

A specialised Modular Monitor which has cardiovascular monitoring feature with 12-channel printing facility through 216mm modular printer. Monitor has great flexibility in monitoring different parameters such as IBP, CO2, Gas Monitoring, Cardiac output, BIS & ICG.



AMRA-EliteView EV15

EliteView EV15 is a 15" multipara patient monitor that provides flexible monitoring solution in various clinical environment. In addition to standard parameter monitoring, EliteView EV15 provides advanced parameter monitoring options such as IBP, CO2, Gas Monitoring, Cardiac output, BIS monitoring & ICG to meet varied and specific requirement.



AMRA-EliteView EV 10

Multipara patient monitor suitable for adult and neonatal patient categories, EliteView EV10 comes with a 10.4" colour LCD touch-screen display. The monitor is designed to provide an easy-to-use interface and can be configured for monitoring optional parameters like IBP & CO2. EliteView EV10 contains an integrated HL7 communication protocol.

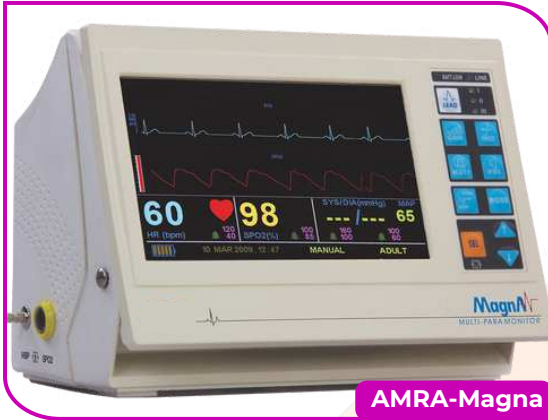


AMRA-Ultima Prim

Ultima Prime, a 12" wide multipara patient monitor is suitable as a flexible and efficient monitoring solution in mid-acuity. The monitor offers advanced parameter options such as IBP, CO2, Gas Monitoring & ICG to meet specific requirements, provides an optional connectivity to BPL Medius+ Central Nursing Station Software and displays a maximum of 10 waveforms.



PATIENT MONITOR



Magna is compact, lightweight and easy-to-use vital sign patient monitor. It meets the basic clinical needs with 3 or 5-lead ECG, SpO2, NIBP & Respiration.



Multipara Monitor Basic 5 Para Model – Truvision 12" Display



Multipara Monitor (High End) Basic 5 Para Model – X12 - Edan 12" Display



Multipara Monitor Basic 5 Para Model – PM7000D 12" Display



Masimo Spo2 & NIBP (3 Para) Masimo Original Spo2 8" Touch Screen

ETCO2 MONITOR

AMRA-5200E



ETCO2 MONITOR

- The TM 109 monitor supports the display of two waveforms and up to eight parameters using a 4.3 In Color LCD.
- Standard with sidestream ETCO2, easily change to mainstream by advanced order

INBUILT ETCO2

PRINCIPLE OF OPERATION

- Solid state sidestream module. Single beam, non dispersive infrared (NDIR) absorption, ratiometric measurement

INITIALIZATION TIME

Capnogram within 10Sec., Full specification within 60 sec

- Routine calibration is not required. 8 sec zero performed when power on or ambient temperature changing too faster.

SAMPLING FLOW RATE

- 100 ml/min (can be set from 50 to 200ml/min). with SPO2 & Respiration

PRINCIPLE OF OPERATION

- Red/Infrared absorption.

CENTRAL NURSING STATION



CNS MEDIUS+ is a central monitoring solution that offers a 'one touch' access to patient demographics, alarm settings, reports printing and bedside view along with some critical functions like ethernet interface, two-way communication, freezing a particular patient's waveforms for detailed analysis, remote monitoring capability and HL7 connectivity for HIS.

Medius+ CNS remote clinical application expands your access to valuable information stored at the Medius Central Station by making it available virtually anywhere on your hospital network. When deployed with internet availability on your PC/Laptop, Medius+ provides real-time views of the monitored patient information with a single sign on and integrated patient selection. You can view vital signs data of patient monitors from any location with access to your hospital's CNS server.



SYRINGE PUMP



AMRA-1509E



AMRA-909T

PRODUCT FEATURES:

- Vein Infusion Modes: Easy Speed-Setting Mode, Time-Volume Mode, Dosage Weight Mode.
- The system automatically opens up KVO after injection(reopens vein circulation)
- The machine automatically records the settings for last injection.
- Function to Auto-Define a Syringe: complete calibration technology for syringe brand definition that ensures the compatibility of any syringe, brand and injection accuracy

SPECIFICATION

- **Syringe size: 2ml(For 1509E), 5ml, 10ml, 20ml, 30ml & 50/60ml**
- Volume Limit: 0.1ml-999.9ml

- Rate: 10ml 0.1ml to 300ml/h, 20ml=0.1ml to 600ml/h, 30ml=0.1ml to 900ml/h & 50ml=0.1ml to 1500ml/h
- Battery Backup: 4 hrs.
- Weight: 2.2 kg
- Dimension: 280mm x 210mm x 130mm



AMRA-609



AMRA-Acura S1

FUNCTION & FEATURES

- Dual Display: 2.8-inch color LCD & LED for rate display
- Compatible with all standard syringes: 5ml – 60ml
- Infusion Modes: Rate Mode, Time Mode and Drug/Weight Mode
- In-built Drug Library
- Dual Bolus Modes: Manual & Automatic bolus
- 3 level occlusion sensitivities setting (programmable)
- 2000 history records and last configuration memory
- Horizontal & Vertical fixation clamp



AMRA-809T

PRODUCT SPECIFICATION

- Speed Range ml/h-1200ml/h (increment of 1ml/h)
- Infusion Accuracy with in $\pm 5\%$, Battery Backup - 4 hours
- High Speed Infusion 100ml/h--1200ml/h (can be calibrated)
- Volume Limit 1ml-999.9ml with increment of 0.1ml
- Infusion Volume Done 9999ml(increment of 0.1ml)
- Weight:-1.8kg, Dimension:-140mm(L)x 157mm(W)x 220mm(H)



INFUSION PUMP



AMRA-IP01

FUNCTION & FEATURES

- HD LCD Display, high capacity words, friendly user interface, dynamically display work status
- The infusion pump is compatible with any brand of infusion sets after correct calibration
- The infusion pump has two work modes.ml/hand drop/min can switch freely
- There are three levels of occlusion: high, middle and low for the pump
- The pump has purge function
- The infusion pump will automatically open up KVO as infusion is completed.



AMRA-Acura VI

FUNCTION & FEATURES

- 3.2-inch High definition color display
- Infusion Modes: Rate Mode, Time Mode, Weight Mode, Stage Mode, Drip Rate Mode
- In-built Drug Library
- Dual Bolus Modes: Manual & Automatic bolus
- 3 level of occlusion pressure (programmable)
- 2000 history records and last configuration memory
- Horizontal & Vertical fixation clamp



AMRA-VD-820

- Flow Rate of infusion Speed Range **1-600mL/h** Step: **1mL/h**
- The Total Amount of injected fluid Volume can be Set to a Pre-Set Range **1-9999 mL** Fast Forward (Rinse) Velocity **600mL/h**
- **KVO Rate of 1mL/h.** Keeping the Vein Open State
- **Built-in Rechargeable Lithium-ion Battery**
- Time After the Battery is Fully Charged Onward to 600mL/h Speeds Available Over Two Hours
- Show Information can be Displayed Flucuity Pre-set Amount, The Camulative Number of Bubbles, Obstruction, Complete, Power Indicator, Battery Low
- **Alarm Infusion is Completed, Low Battery Reminder, Bubble Alarm, Blocking Alarm, Air Alarm,** Ultrasonic Sensor
- Pump Door Security Work During the Pump Door can't be Opened by The System Self-Locking, Only Stopping State to Open



FIBRE LARYNGOSCOPES



Penlon Diamond Fibrelight Laryngoscopes

Designed with excellent fibre optics and gold switch contacts, Diamond FibreLight Range is a fully interchangeable, internationally compatible laryngoscope system that provides brighter light, premium quality and performance for life. Diamond FibreLight range is designed with an ability to withstand repeated autoclave treatment. Cool, bright light ensures there is no risk of tissue burns from hot lamps during lengthy intubations.



Penlon Premier Fibrelight and Conventional Laryngoscopes

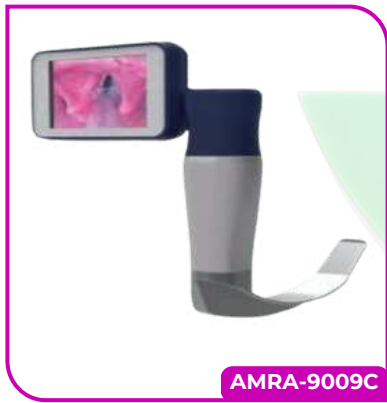
The Premier Range consists of the ISO 7376/1 'Red' System Fibrelight and traditional 'Hook-on' Conventional Laryngoscopes. Standard handle is waterproof for easy sterilisation. The Penlight handle gives improved balance with smaller blades. The Stubby handle is designed to facilitate difficult intubation on a short neck or a barrel-chested patient.



Penlon McCoy Laryngoscopes

The original levering tip laryngoscope for difficult intubation with over twenty years refinement and experience guarantees performance you can trust. McCoy range provides the clinician with greater flexibility and control.

FLUID WARMER



PRODUCT SPECIFICATION

- 3.5 Inch LCD Color Display
- Rotate Display
- USB Charger
- 2.0 Mega Pixel Camera with High Resolution Video Function
- Lithium Battery: 8 Hours Battery Backup
- 350g
- **Optional:** Reusable Blade or Disposable Blade

VIDEO LARYNGOSCOPE

AMRA-ET04



APPLICATIONS

Routine transfusion.
Low flow rate infusion in ICU.
Transfusion exchange High calorie infusion

- Display Show the Temperature
- Use Ceramic Heater
- Digital Auto Controller
- Temperature
- No Need Programing
- Auto Cut of Room

SPECIFICATIONS

Model:-AMRA-BW9
Tube size 3.0-4.0mm
Flow Rate
2-5.3ml/min., Suitable speed of Infusion Fluid
40-80 Drop/min.
Pawer
200w, 60Hz, 70w
Liquid ature At The Enterance 15c-25c.
Liquid Temput The Exit 30c-41c.
Packing Dimension: (05×15.5×12.5cm
Weight: 600g



AED (MADE IN INDIA)



AMRA-DF 2628 Phoenix

Features

- Automated external defibrillator with bi-phasic current limited waveform
- Automatically analyses and records the patient's ECG and prepares an electric shock
- Programmable CPR interval & shock sequence
- Audio and visual prompts
- Metronome signal for synchronizing chest compressions
- Automatic self-tests ensures operational readiness
- Upto 200 shocks applicable with new battery
- Programmable in regional languages



AMRA-DF 2509/R

Features

- Detailed voice prompts and visual icons for guidance to user.
- Battery capacity : 200 shocks or 4 hours
- 20 sec delay time between two shocks
- Evaluates patient ECG to determine if rhythm is shockable



AMRA-DF 2509/R

Features

- LCD Display 3.5 inch for shock status message & ECG trace
- Detailed voice prompts and visual icons for guidance to user.
- Battery capacity : 200 shocks or 4 hours
- 20 sec delay time between two shocks
- Evaluates patient ECG to determine if rhythm is shockable

- **TYPE**
- Fully Automatic External Defibrillator
- **MODEL**
- Ddu-120a, Ddu-120e
- **WAVEFORM**
- Biphasic Truncated Exponential
- (impedance Compensated)
- **ENERGY**
- Adult: 150 Joules
- Pediatric: 50 Joules
- (nominal Into 50 Ohm Load)
- Charge Time"

- **VOICE PROMPTS**
- Extensive Voice Prompts
- Guide User Through Operation
- Of The Unit And Cpr
- **CPR PACING**
- Metronome
- **Controls**
- Lighted On/off Button
- **INDICATORS**
- "Check Pads"
- "Do Not Touch Patient"
- "Analyzing"
- Armed-for-shock
- AED Status LED
- "Tupecal, With New Battery At 25

AMRA-DDU-120A



AED (MADE IN INDIA)



SMART DEFIBRILLATOR

AMRA-SMART DEFIBRILLATOR-001



- FASTER ANALYSIS & SHOCK DELIVER
- BIPHASIC ENERGY OUTPUT
- SMART SELF-TEST SYSTEM
- ADULT & PEDIATRIC MODE
- MULTI-LANGUAGE SUPPORT

DF-2617 is designed for manual & AED mode of operation. Easy-to-use interface minimizes the time required to deliver lifesaving shock to SCA patients.

Features

- Bi-phasic defibrillator
- 5.7-inch LCD screen
- User-selectable energy levels from 2J to 300J in manual defibrillation mode
- Optional AED Mode, which has voice prompt & metronome signal for CPR support
- Synchronized cardioversion
- Remote energy selection and charging through paddles
- 24 events recording
- Minimum 100 discharge of 300J with fully charged new battery



AMRA-DF 2617/AED/R

With user-friendly features and simple use, DF-2509 monophasic defibrillator comes with a 5.7 inch LCD screen and has synchronized cardioversion, remote charging through paddles as well as event storage facility.

Features

- Monophasic defibrillator
- 5.7-inch LCD screen
- User-selectable energy levels from 2J to 360J
- Synchronized cardioversion
- Less than 5 seconds to charge to 360J
- Remote charging from paddles
- 24 events memory
- Minimum 100 discharge of 360J with fully charged new battery



AMRA-DF 2509/R



BI-PHASIC DEFIBRILLATOR

SPECIFICATIONS

- **AMRA-2008 Optional: SPO2, NIBP & Printer**
- **AMRA-2009 Optional: AED, SPO2, NIBP, Pacemaker, 300 J**
- **Masimo SPO2, 12 LED ECG + ETCO2**
- Operating Mode: Manual, Display: 7" Colour TFT
- Waveform: Biphasic Truncated Exponential
- Energy: 2 to 200 joules in 12 steps selection
- Energy display: Displays selected and charged/delivered energy
- Synchronous Cardio Version: Energy delivery begins within 60 ms of the QRS Peak
- Charging Time: 6 seconds on Mains
- Paddle Assembly: External paddle assembly with coil retractable high voltage cable. Adults & Pediatric paddle integrated to same handle
- Check Mode: Manual check mode
- Patient Impedance range: 35 ohm to 250 ohm
- Shock Delivery: Through paddles or pads
- Battery: 12 V 4.5Ah, Rechargeable, (Sealed Lead Acid)
- Back-up time: 3 hours min. 70-100 shock of 150 Joules.
- Display area: 150 mm x 90 mm
- Dimensions: H280 x W 330 x D220 mm (Max) without Paddle
- Weight: Approx.6 Kgs.
- Printer Size: 50 X 20
- 360 Joules Optional



The Relife 900 is a biphasic defibrillator system that provides advanced monitoring functions and acute cardiac care by multiple modes of operation: AED, manual defibrillation, synchronized cardioversion, external pacing and monitoring - MASIMO SPO2, SunTech NIBP, ETCO2.

Features

- Biphasic defibrillator
- 7-inch color TFT screen
- User selectable energy levels from 2J to 300J in manual defibrillation mode
- Synchronized cardioversion
- Remote energy selection and charging through paddles
- 24 events recording
- Minimum 100 discharge of 300J with fully-charged new battery
- Optional enhancement: AED, NIBP, MASIMO SPO2, either pacing or capnography (CO2)

VENTILATOR

AMRA-v. Maquet Servo-s ICU Ventilator

Ventilation

Invasive and non-invasive ventilation (with leakage compensation for non-invasive ventilation) for all patient categories.

Servo quality

Ventilation independent of central gas installations when combined with Compressor Mini.

Ventilation Mode :

PC, VC, PRVC, PS/CPAP, VS, SIMV (VC) + PS, SIMV (PC) + PS, SIMV (PRVC) + PS, Bi-Vent/APRV, NIV PC, NIV PS.



AMRA- vi. HAMILTON-C2 Ventilator

The HAMILTON-C2 mechanical ventilator is a universal ventilation solution for all patient groups. The HAMILTON-C2's compact design and independence from external power and air supplies allow for maximum mobility throughout the hospital. The integrated high-performance turbine guarantee stop performance even with noninvasive ventilation.

- Ventilation of adults, children, and neonates
- Tidal volumes as low as 2 ml
- >7 h of battery operating time
- Independent air supply
- Advanced ventilation modes including ASV®
- High-performance NIV ventilation

Ventilation Cockpit

- Dynamic Lung : Real-time visualization of the lungs with representations of tidal volume, lung compliance, resistance, and patient activity.



AMRA-iv. Respironics V200 Ventilator



DETAILS

The Respironics V200 critical care ventilator reduces the work of breathing and streamlines patient care provides with.

SPECIFICATIONS

General : Patient types

Adult

- Neonates 0.5 kg

Breath Types : Volume control ventilation (VCV)

- Pressure control ventilation (PCV)

Modes : A/C Assist/control

- CPAP Continuous positive airway pressure
- NIV Noninvasive ventilation
- PSV Pressure support ventilation
- SIMV Synchronized intermittent mandatory ventilation
- SIMV/PSV SIMV with pressure support

VENTILATOR

AMRA-viii. Drager Savina® 300 Select



The Drager Savina® 300 Select (in this configuration) combines the independence and power of a turbine-driven ventilation system with sophisticated ventilation modes.

- Sophisticated ventilation modes for critically ill patients(e.g PC-APRV,VC-MMC,AutoFlow®)
- Automatic Tube Compensation ATC® reduces the work of breathing for intubated patients with spontaneous breathing
- Free breathing with AutoFlow in volume constant ventilation at a minimum pressure level Non-invasive ventilation (NIV) available in all modes with a very quick response times to patient efforts

AMRA-iii. Drager Savina Ventilator

SPECIFICATIONS

Ventilation Mode

PPV(CMV), IPPVAssist (CMVAssist), SIMV, SIMVASB (SIMV/PS)
CPAP.CPAPASB (CPAP/PS), BIPAP* (PCV+) (optional) BIPAP*
ASB (PCV+/PS) (optional)

Patient Type	: Adult, pediatric
Ventilation Frequency	: 2 to 80 bpm
Tidal Volume	: 0.05 to 2.0 L,BTPS")
Inspiratory Flow	: 0 TO 180 L/min
Inspiratory Pressure	: 0 to 99 mbar"*)(cmH20)
PEEP/Interm. PEEP	: 0 to 35 mbar (cmH20)
Pressure Support/ASB	: 0 to 35 mbar (cmH20) (relative to PEEP)
Flow Acceleration	: 5 to 200 mbar/s (cmH20s)
O2-Concentration	: 21 to 100 Vol.%
Trigger Sensitivity	: 1 to 15 L/min



AMRA-vii. Hamilton C3 Ventilator

- The HAMILTON-C3 ventilator is a modular high-end ventilation solution

